

**Intelligent Transportation Systems**

700 Kipling Street, Suite 2500  
Lakewood, Colorado 80215  
Phone (303) 512-5834  
FAX (303) 239-0848



## CTMS/CTIS

### UC CTMS 2.10 - Search Map

Version 1.1

**Approved By**

John Nelson  
CDOT ITS Office

Signature: \_\_\_\_\_

Date: \_\_\_\_\_

Frank Kinder  
CDOT ITS Office

Signature: \_\_\_\_\_

Date: \_\_\_\_\_

CTMS/CTIS	Version: 1.1
UC CTMS 2.10 - Search Map	Date: April 19, 2005

## Revision History

<b>Date</b>	<b>Version</b>	<b>Description</b>	<b>Author</b>
April 29, 2004	1.0	Initial Version	Raj Chaudhuri
July 27, 2004	1.0	Added Alt Flow. Added wire-frames. Added assumption	Raj Chaudhuri
August 30, 2004	1.0	Added Basic Flow	Raj Chaudhuri
December 6, 2004	1.1	Added additional detail around the behavior of the Find window and displaying the results. Added special requirements; updated post-conditions.	Nancie Fay

CTMS/CTIS	Version: 1.1
UC CTMS 2.10 - Search Map	Date: April 19, 2005

## Table of Contents

1.	Use Case	1
	1.1 Abstract	1
	1.2 Actor(s)	1
2.	Flow of Events	1
	2.1 Basic Flow	1
	2.2 Alternate Flow	1
3.	Special Requirements	2
4.	Assumptions	2
5.	Pre-Conditions	2
6.	Post-Conditions	2
7.	Extension Points	2
8.	Issues / Constraints / Questions	2
9.	Data Elements	2
10.	Wire-Frames	2

CTMS/CTIS	Version: 1.1
UC CTMS 2.10 - Search Map	Date: April 19, 2005

# UC CTMS 2.10 - Search Map

## 1. Use Case

### 1.1 Abstract

This UC allows the user to search for elements in the CTMS client GUI

### 1.2 Actor(s)

Actor	Description
Administrator	The System Administrator for the Colorado Transportation Management Center (CTMC)
Maintenance	The Maintenance person on duty for the Colorado Transportation Management Center (CTMC)
Operator	The Operator on duty for the Colorado Transportation Management Center (CTMC)

## 2. Flow of Events

### 2.1 Basic Flow

1. The user (Operator, Maintenance or Administrator) has logged in (see pre-condition).
2. The user clicks on Find icon (binoculars).
3. The system requests the following information: Value (case sensitive), Layers to Search (system lists all layers here), and Results area (Layer, Field, Value).
4. The system provides buttons for the following: Find, Close, Pan to and Zoom to.
5. The user enters a Search Criteria (e.g. DMS name) in the Value box, selects a layer (e.g. the VMS layer) and clicks Find.
6. The system searches for specified Search Criteria.
7. In the event the system finds one or more matches, the system lists them in the Results window (Layer, Field, Value). The system provides the ability to select a row in the results.
8. The user clicks on one of the rows (in the Results Window) and clicks Zoom to.
9. The system selects the element and zooms to it in the Map View.
10. The user clicks the Close button.
11. The system displays the Navigate Desktop screen (at the zoom/area presented in step 9).
- 1.

### 2.2 Alternate Flow

12. The user (Operator, Maintenance or Administrator) has logged in (see pre-condition).
13. The user clicks on Find icon (binoculars).
14. The system requests the following information: Value (case sensitive), Layers to Search (system lists all layers here), and Results area (Layer, Field, Value).
15. The system provides buttons for the following: Find, Close, Pan to and Zoom to.
16. The user enters a Search Criteria (e.g. DMS name) in the Value box, selects a layer (e.g. the VMS layer) and clicks Find.
17. The system searches for specified Search Criteria.
18. In the event the system finds one or more matches, the system lists them in the Results window (Layer, Field, Value). The system provides the ability to select a row in the results.

CTMS/CTIS	Version: 1.1
UC CTMS 2.10 - Search Map	Date: April 19, 2005

- 18.1. In the event the system does not find any matches, no results are presented in the Results window, and the message 0 Results Returned is displayed at the top of this window.
- 18.2. Go to step 10.1
- 19. The user clicks on one of the rows (in the Results Window) and clicks Zoom to.
  - 19.1. The user clicks one of the rows and clicks on Pan to.
  - 19.2. The system pans to the element selected in the Map View
  - 19.3. Go to step 10.1
- 20. The system selects the element and zooms to it in the Map View.
- 21. The user clicks the Close button.
  - 21.1. The user performs a different search.
  - 21.2. Go to step 6
- 22. The system displays the Navigate Desktop screen (at the zoom/area presented in step 9).

### 3. Special Requirements

Values entered in Find window are case sensitive.  
 User can view Navigate Desktop screen while Find window is open.

### 4. Assumptions

Utilizes the out-of-the-box functionality provided by MapObjects

### 5. Pre-Conditions

UC CTMS 2.00 – Navigate Desktop

### 6. Post-Conditions

Find elements in screen (and either pans to them or zooms in on them in the Map View if indicated)

### 7. Extension Points

### 8. Issues / Constraints / Questions

Can we hide the 'Addresses' tab? ← No per Trey.  
 Can we select multiple rows in the results?

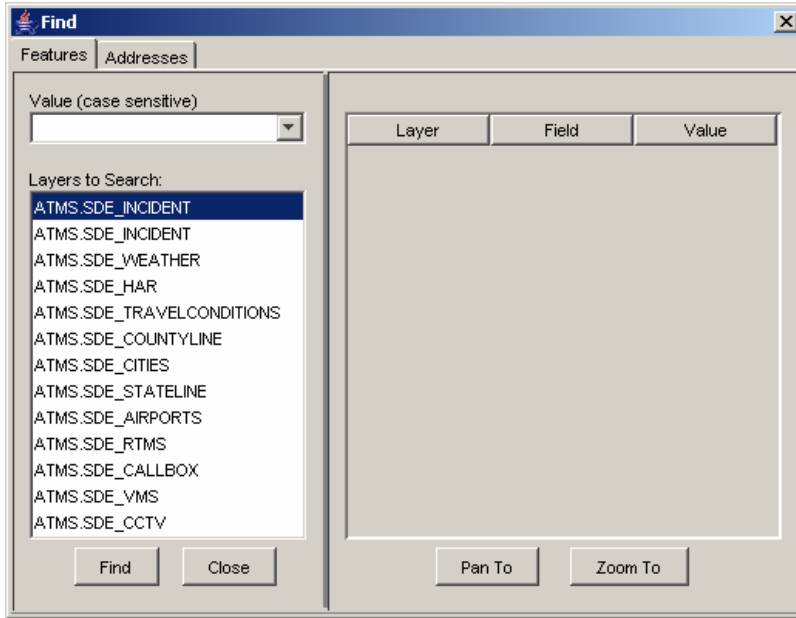
### 9. Data Elements

Name	Description	Validation	Example

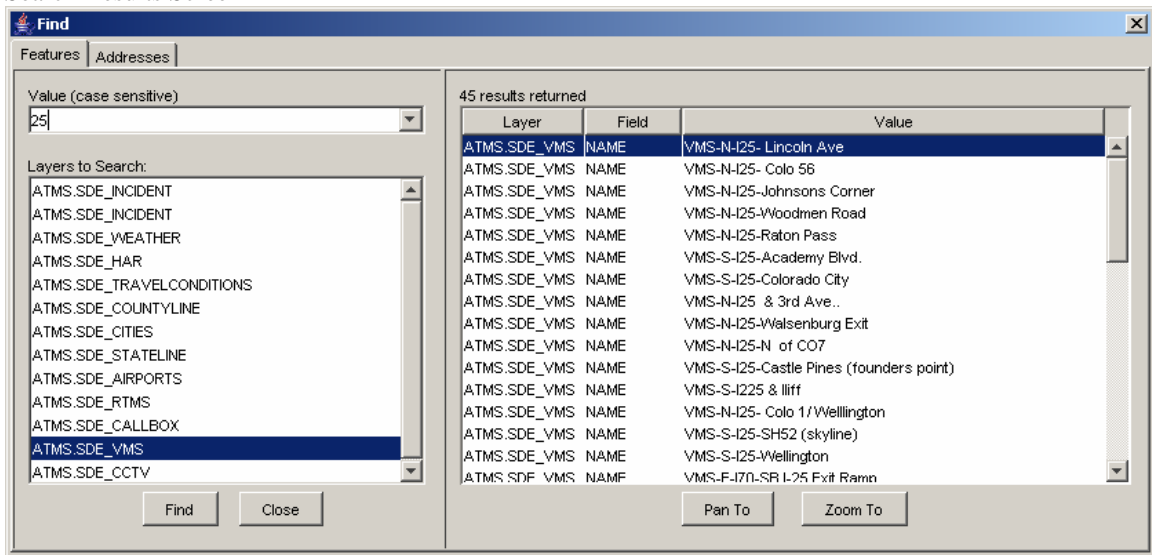
### 10. Wire-Frames

CTMS/CTIS	Version: 1.1
UC CTMS 2.10 - Search Map	Date: April 19, 2005

Find Screen



Search Results Screen



Addresses Screen ← Can we hide this screen ???

